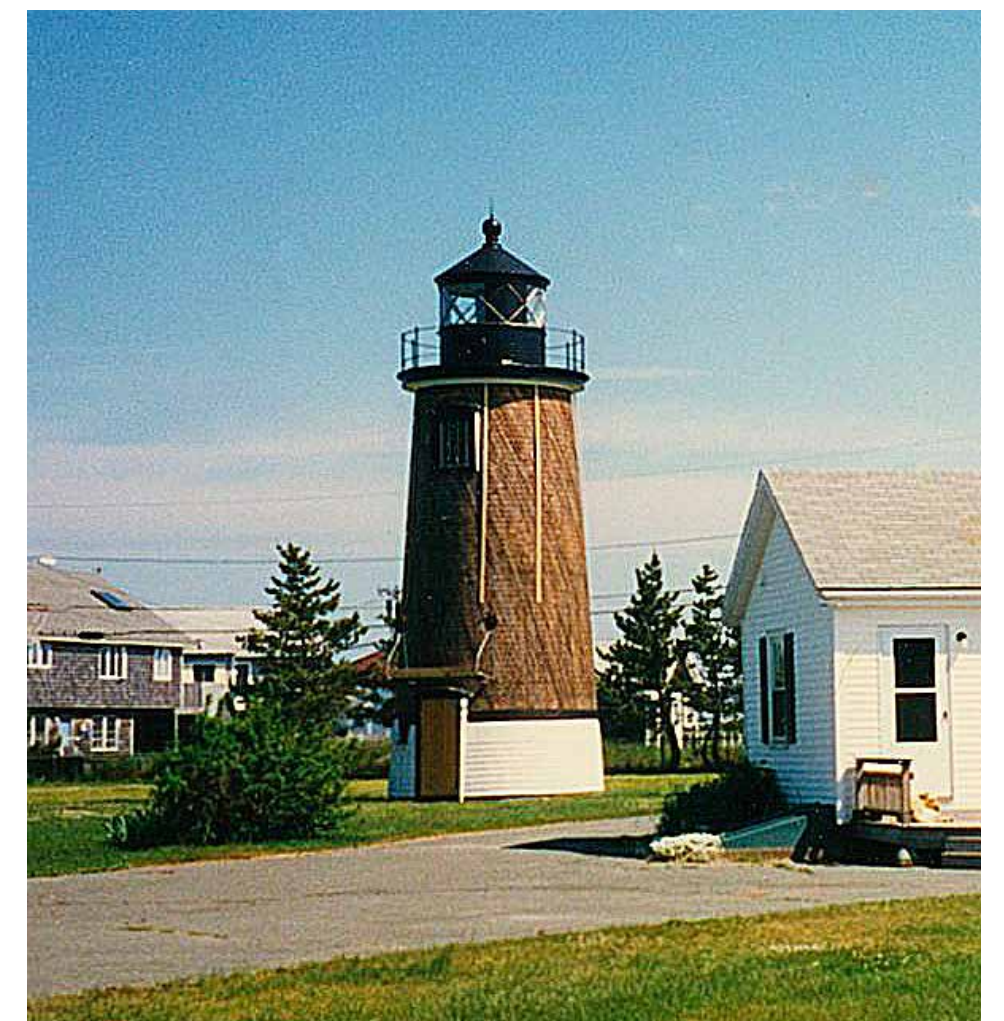


WHO ARE THE FRIENDS OF PLUM ISLAND LIGHT?



Transfer ceremony, June 15, 1996

The Friends of Plum Island Light is made up of volunteers. It is a nonprofit educational organization established in 1994 to direct and support the preservation, operation, and maintenance of the Newburyport Harbor Light, aka Plum Island Light. In addition, one of the Friends primary objectives is to inform the public of the history and story of the light. The United States Coast Guard (USCG) leased the lighthouse to the Friends with an official transfer ceremony taking place on June 15, 1996.



Reshingled tower

In 2003, the USCG deeded the lighthouse and property to the city of Newburyport, which, in turn, leased it to the Friends.



Replacement of lighthouse floor

Since 1996, the Friends have opened the lighthouse many times for both public and private showings to people from every state in the country and many foreign countries. We have also hosted wedding ceremonies and invested significant time and money to maintain and renovate the lighthouse and grounds, including completing the following significant projects:

- Replacement of the lighthouse floor
- Construction of the supporting outbuilding
- Installation of the memorial brick walkway
- Interior wall board installation
- Stairway lighting installation
- Landscaping
- Flagpole installation
- Granite bench seating
- New rubber roofing installed on the catwalk floor
- Repainting of the entire lighthouse exterior
- Replacement of first floor and landing windows
- Installation of a new catwalk cable railing system
- Installation of replacement glass panels and reglazing all the exterior glass panels of the light room
- Repainting the interior of the light room
- Installation of this kiosk



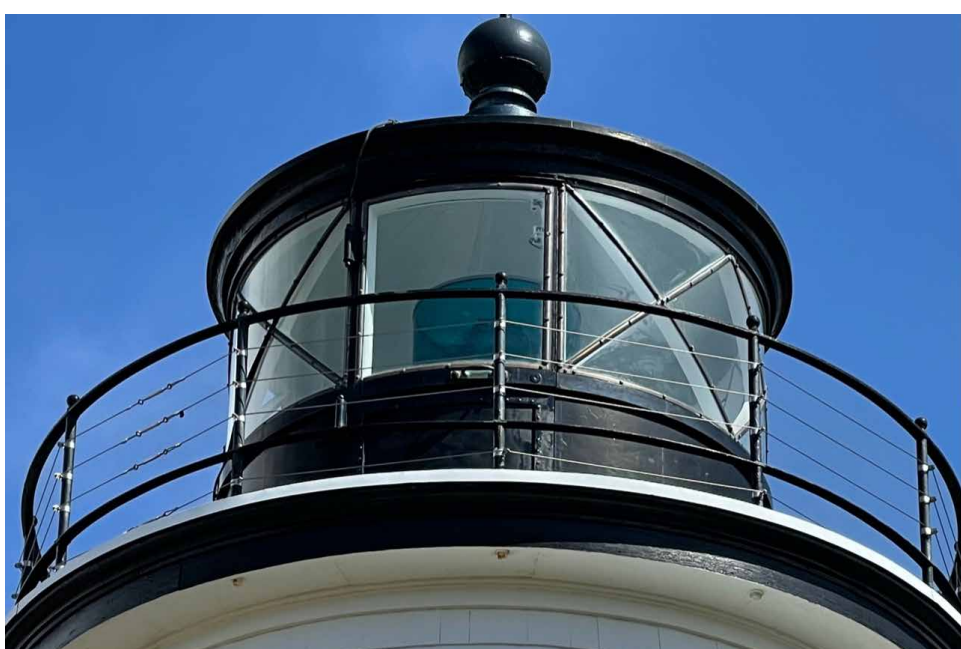
Installation of replacement glass



Replacement of lighthouse floor

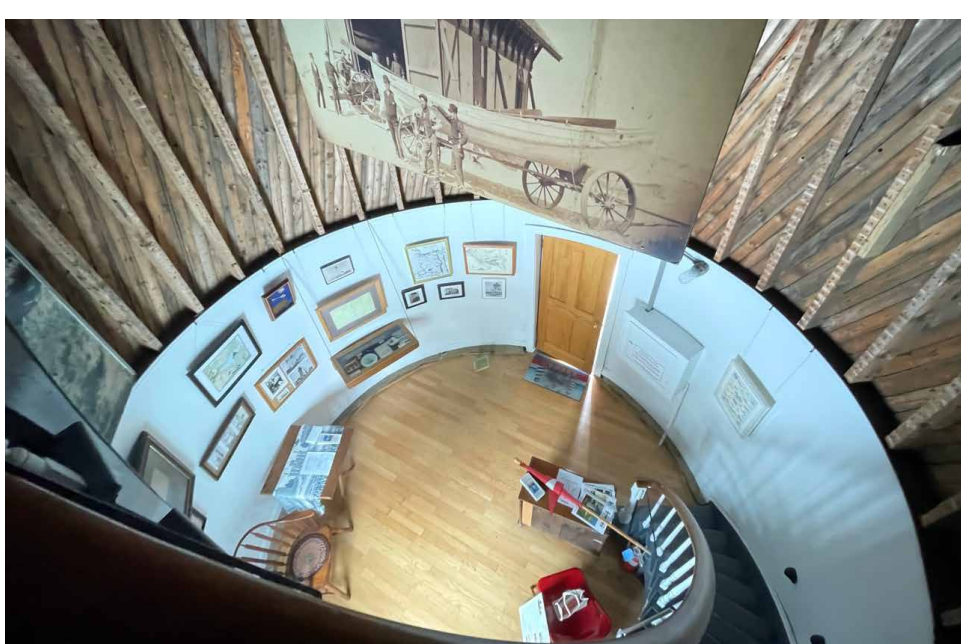


Installation of brick



Catwalk safety cable system

The USCG still maintains the Fresnel lens and the electric-powered light within the lens.



Interior wall board installation



Shed construction



Installation of replacement glass